



SPEERS
 CONSTRUCTION INC.
 IT'S ABOUT
 PERFORMANCE

Meet Our People

Michael Speerbrecker, President

Mike grew up around heavy equipment and construction. After getting his business degree, he came back to work for the company. Since then, his involvement has been an integral part of the business' growth and successes. Mike ensures the company's vision is always in the forefront and progressively works on the strategic planning of the company.



Raymond Speerbrecker, Past President

Ray has been involved in heavy construction and forestry in B.C. since the 50's when he came from Saskatchewan to work on the building of the Trans Canada highway. Ray is still involved in the day to day operations of the company but enjoys the freedom to get away for a game of golf or to go snowmobiling.

Al Ashby, Welding Superintendent

Al first worked for Speers in 2002. Since then he has been in charge of all of our welding and pipe installation including the Canadian Hydro project in Squamish where he oversaw the installation of nine foot penstock on a seventy degree slope. Al has worked all over the world on pipeline projects and his experience and knowledge is a great asset to Speers.



Michael Miller, General Manager

Mike was involved with his own family in a Heavy Construction Company since the mid 1960's and then came to work for Speers in 1998. His vast experience has been a great asset with the growth of the company. Mike brings with him construction management involving estimating, project administration and control, general affairs administration and corporate direction.

Mark Belsham, Forestry Superintendent

Joining Speers in the early part of 2004 Mark brought with him experience in road and cut block design and layout. Along with his technical abilities Mark also brought supervisory experience for all of our forestry operations. Being a diversified individual and forest technologist, Mark takes care of all forestry operations including: road construction, right of way logging, conventional block logging and cable logging.



Wayne Speerbrecker, Mine Superintendent

In a similar way to Ray, Wayne (Ray's brother) moved from Saskatchewan to B.C. to work in construction. Wayne can operate all types of equipment and spent part of the 90's hauling ore at the mine. In 1998 he took the position of Mine Superintendent and is in charge of all mining operations.

Kim Rienks, Controller

Kim came to work for Speers in 1999. Along with her accounting background, she brought technical experience which enabled us to upgrade our administrative systems to a new level. She ensures management is financially informed and assists in making various business decisions.



Sara Joseph, Administrative Assistant

Sara Joseph is Speers newest addition having joined the team in January of 2009 after completing her Business Administration degree. As our Administrative Assistant Sara is responsible for a multitude of tasks including payroll, accounts payable, executive assistant to the president and front reception. Her positive nature and bright cheery personality has proved to be a definite asset to our office.

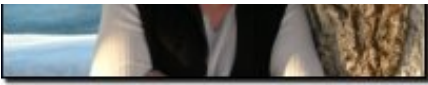
Mike Barton, Master Mechanic

Mike decided to give up wrenching in the underground mines and came above ground to work for Speers in 1997. With his heavy equipment experience and excellent sense of humour, Mike brought Speers the skills and attitude it was looking for. Mike runs his shop professionally and keeps the companies 40 pieces of heavy equipment eco-friendly and running sound.



Sherry Chandler, Health & Safety Coordinator

Sherry joined the Speers team in May 2007 to help implement and streamline the health and safety program and ensure standards are maintained to meet the COR and SAFE certification. She brings with her, 25 years experience in the health and safety field including 20 years as a paramedic and has worked in remote geology exploration, mining and forestry camps to name a few. Her diverse background and organizational skills will be an asset as Speers



continues to grow.